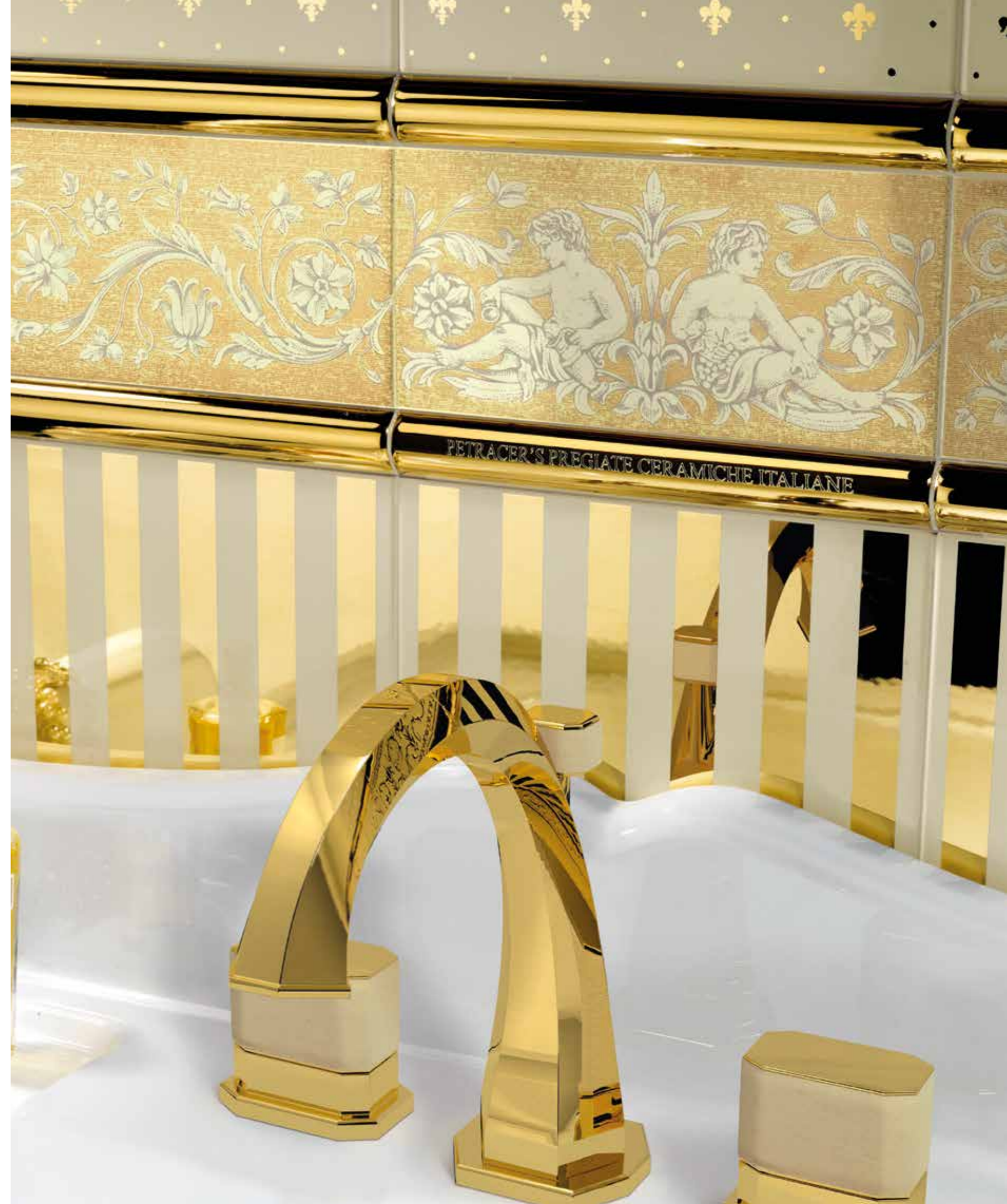


ICONIC
ITALIAN
LUXURY

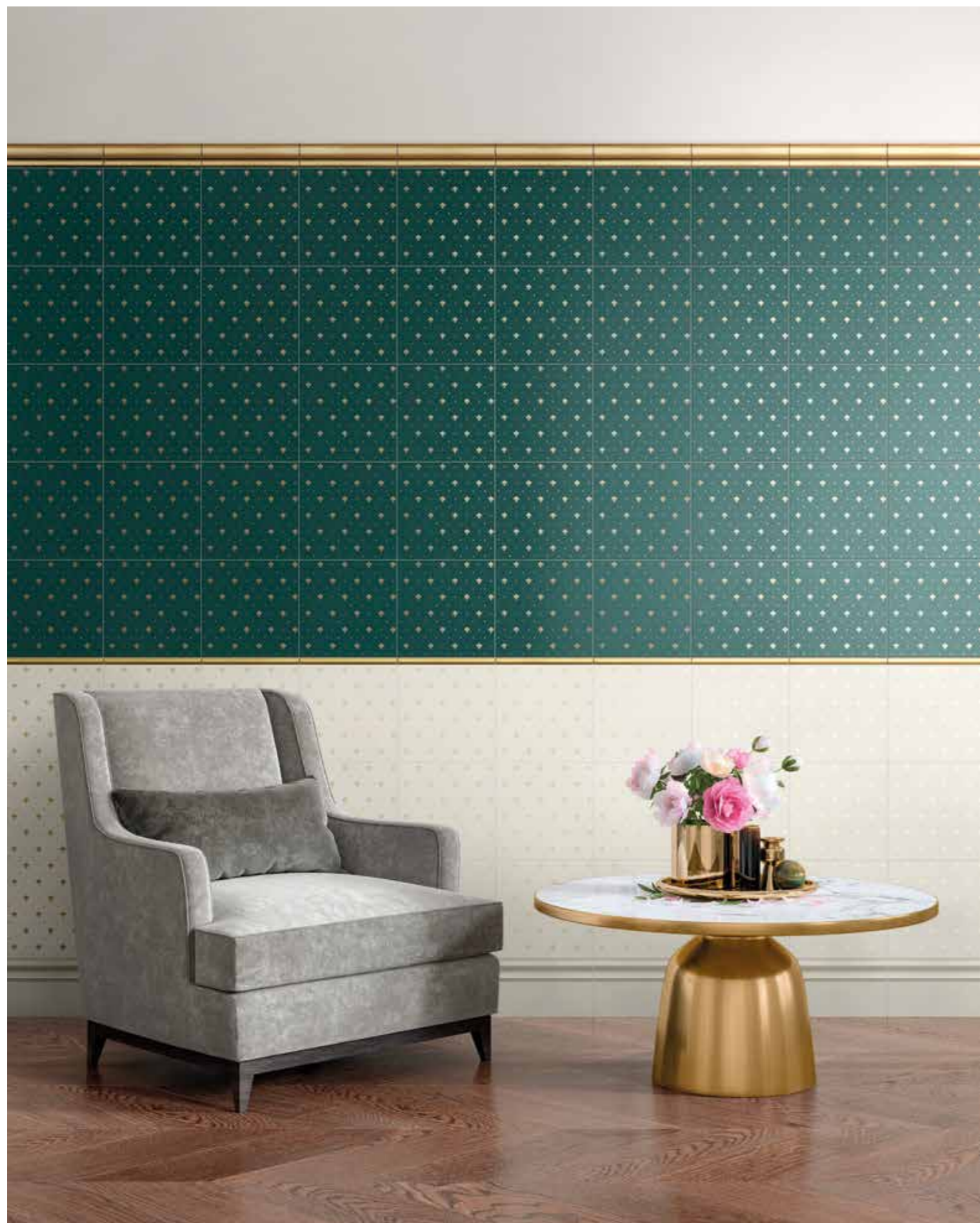


PETRACER'S
ICONIC ITALIAN LUXURY

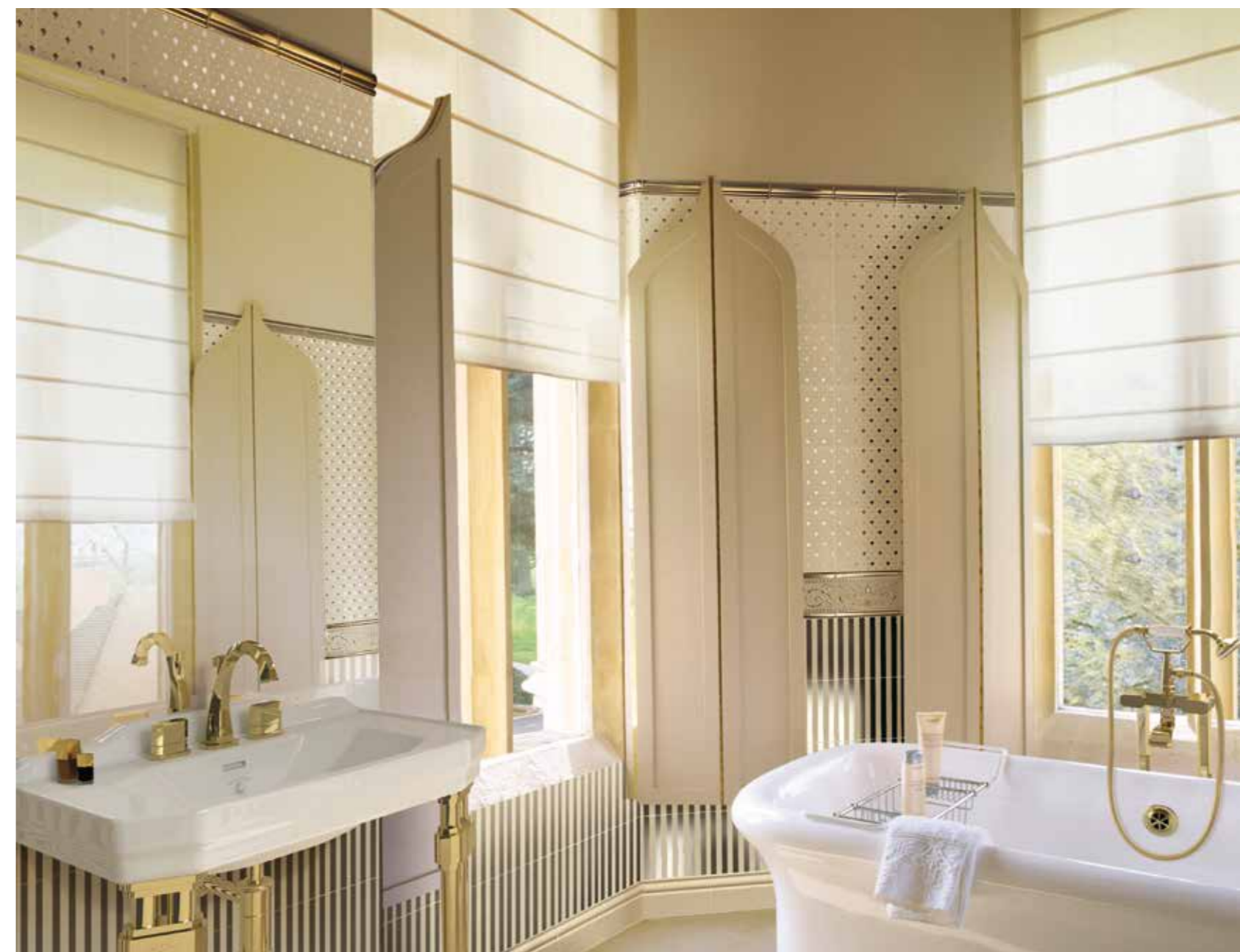
ICONICELEGANCE // *Grand Elegance Gold*







Che si tratti di un arredamento classico e chic, oppure ricercato e glamour, le superfici in oro conferiscono luminosità ed esclusività agli ambienti.



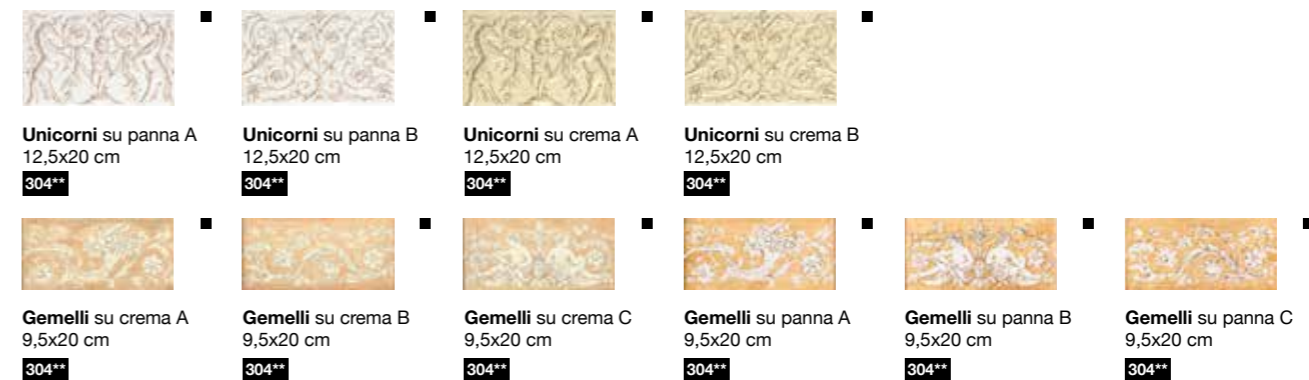
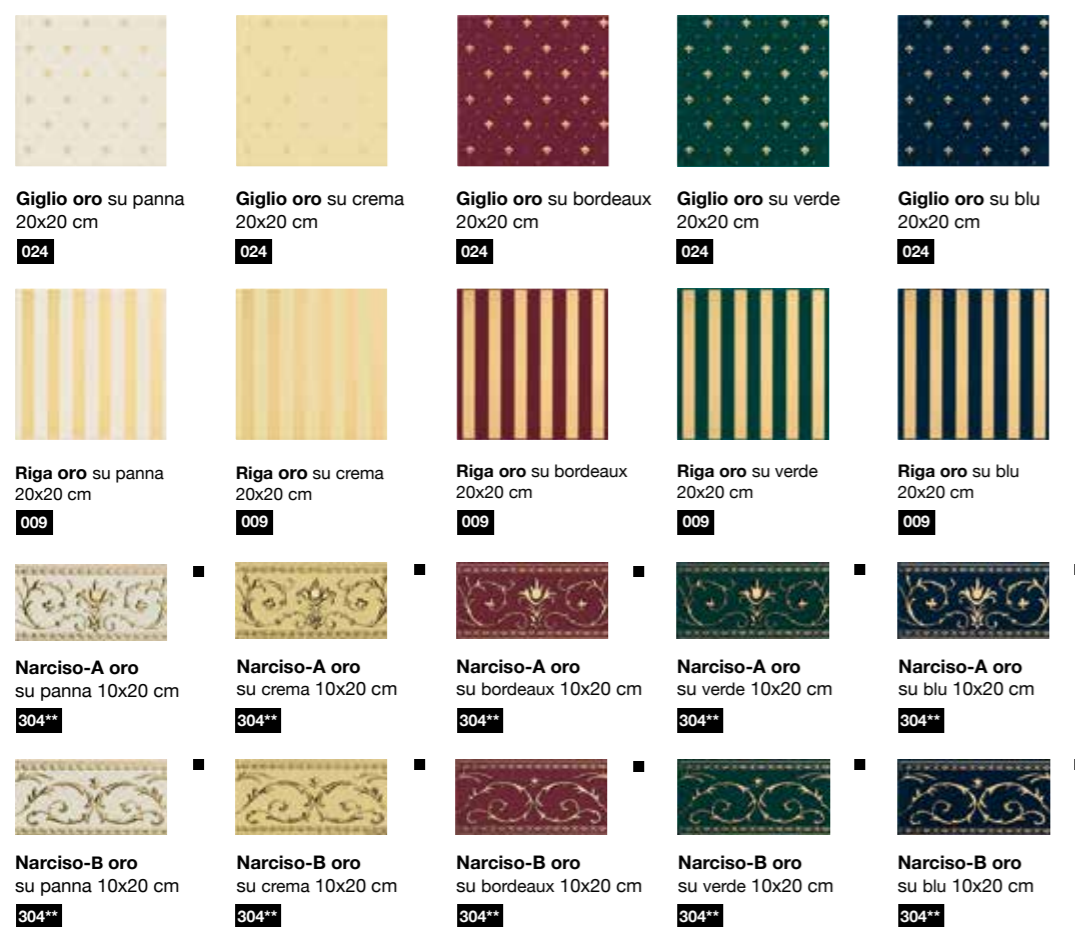
Whether it is a classic and chic furnishing, refined and glamorous, the gold surfaces give brightness and exclusivity to the environments.

GRAND ELEGANCE GOLD

Gamma colori / Available colors



Gamma decori / Decor range



Gamma complementi / Complements range



* Battiscopa 12x20 e angolo battiscopa 2,6x20 sono disponibili fino ad esaurimento scorte / Skirting 12x20 and skirting corner 2,6x20 are available only while stocks last

** Disponibili solo in composizione / Available only in set.

■ Abbinabili anche alla serie Grand Elegance / It is possible to combine with Grand Elegance Collection
Tutti gli articoli sono compatibili con il Grand Elegance. / All items are compatible with the Grand Elegance collection.



PETRACER'S
ICONIC ITALIAN LUXURY

www.petracer.it